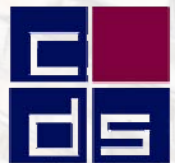


HARAMBEE FIVE POINTS EXCHANGE

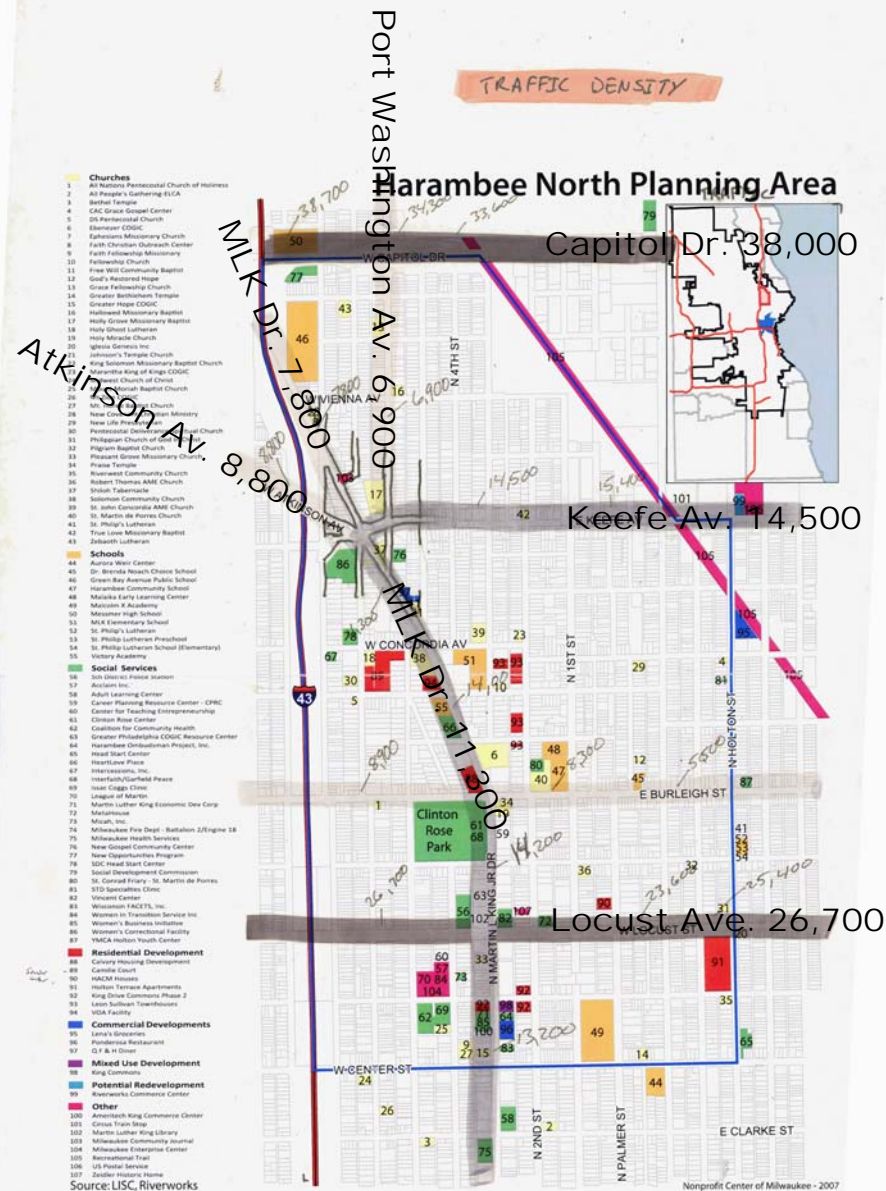
OVERVIEW

1. Vehicular traffic patterns investigation
2. Traffic hubs
3. Existing and potential green space identification
4. Vacant and Under Utilized Parcels
5. Important Intersections
6. Potential Gate Way Conditions
7. Five year Plan
8. Community Gardens
9. 50 Year Plan
10. Five Point Intersection



VEHICULAR TRAFFIC

- Darker lines represent higher traffic volume per day
- The 2 heaviest traveled are:
 - Capitol Dr. has about 38,000 cars/day, it is the far northern boundary to the neighborhood
 - Locust Ave. has about 26,700 cars/day, it is the far southern boundary to the neighborhood
- The Five Point Intersection
 - Keefe Ave. 14,500 c/d
 - N. MLK Dr. 7,800 c/d
 - Atkinson Dr. 8,800 c/d
 - S MLK Dr. 11,300 c/d
 - Port Washington Rd. 6,900 c/d



Community Design Solutions



VACANT OR UNDERUTILIZED PARCELS

- Gaps in the Street Edge Create Discontinuity in the Retail Corridor
- Potential for New Development To Infill Street Edge
- Existing Buildings in Poor Physical Condition and not contributing positively to the city as a place.
- Many Buildings and Parcels Partially or Completely Unused





IMPORTANT INTERSECTIONS

- Create a greater sense of safety at the intersections
- Use traffic slowing device to increase pedestrian safety
- New Streetscaping can Contribute to a stronger sense of place



Community Design Solutions



POTENTIAL GATEWAY CONDITIONS

- Gateway Conditions create a Sense arrival
- Doesn't have to be literal gateway but rather an impression of entrance into defined neighborhood
- Intersection of Concordia and MLK as a Gateway coming south from Downtown
- Intersection of Port Washington and Keefe as a Gateway form the North and East
- Intersection of MLK, Atkinson and Keefe to the West

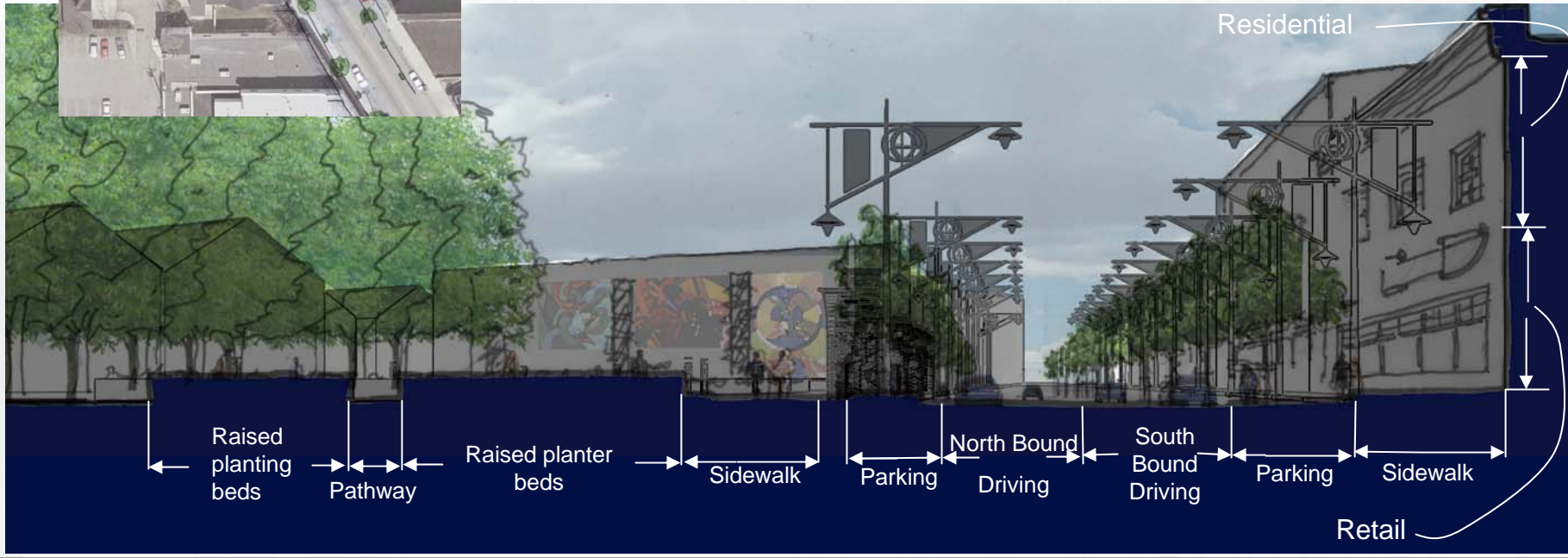


COMMUNITY GARDENS



- Arched trellis's holding the street wall
- A 25' grid was used throughout the garden and into the positions of the lamp posts and trees to organize the site
- The northern green space is a sculpture garden for neighborhood artists
- The southern green space takes advantage of the Elevation change for an outdoor theater.

COMMUNITY GARDENS



COMMUNITY GARDENS ALONG MLK



View From Q.F.H. Soul Food Restaurant

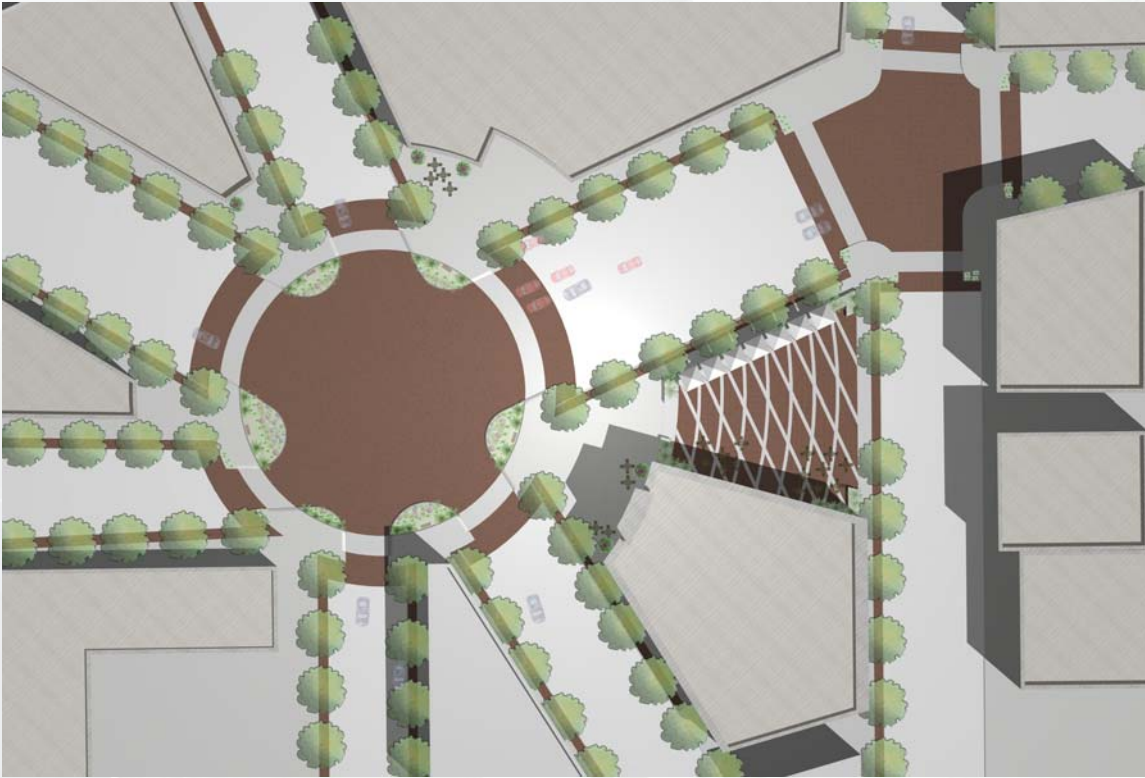
5 POINTS INTERSECTION



Fifty Year Master Plan

- Create a well defined district
- Infill the street Edge
- Create a sense of pedestrian safety
- Streetscaping Strategy to enhance sense of place
- Create a outdoor plaza to draw people to the district
- Mixed use infill with retail on lower level and residential or offices above

5 POINTS INTERSECTION

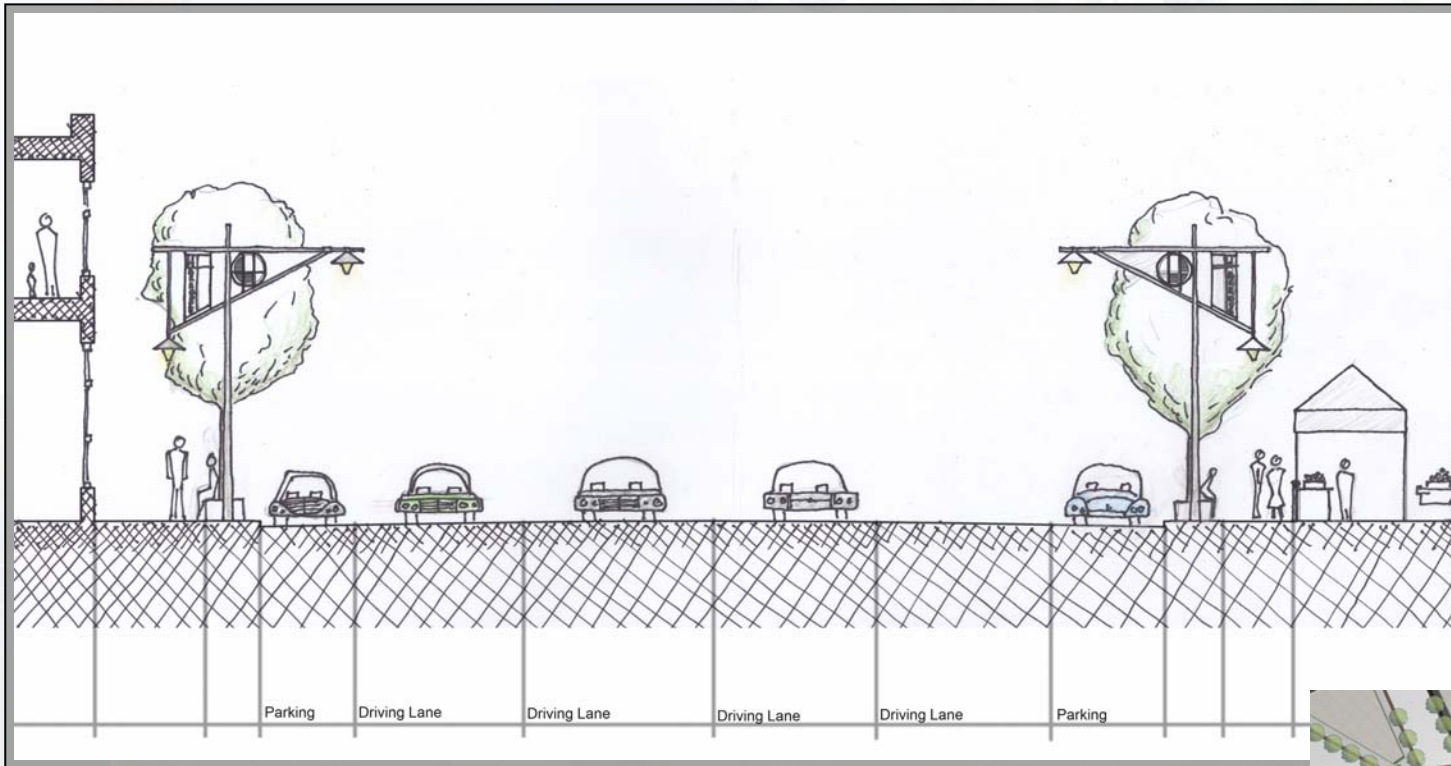


• Curb Bump Outs

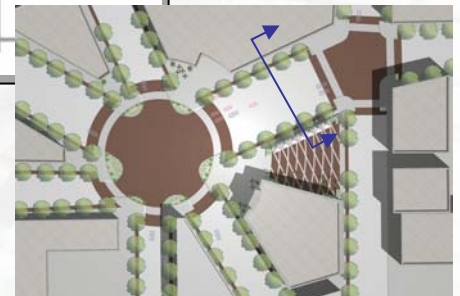


- Increase Pedestrian Safety
- Slow Traffic

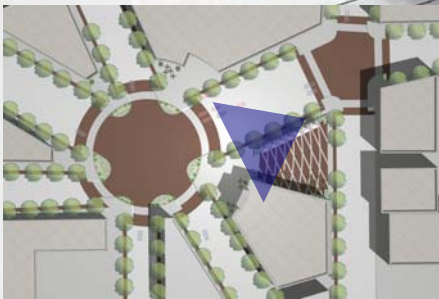
5 POINTS INTERSECTION



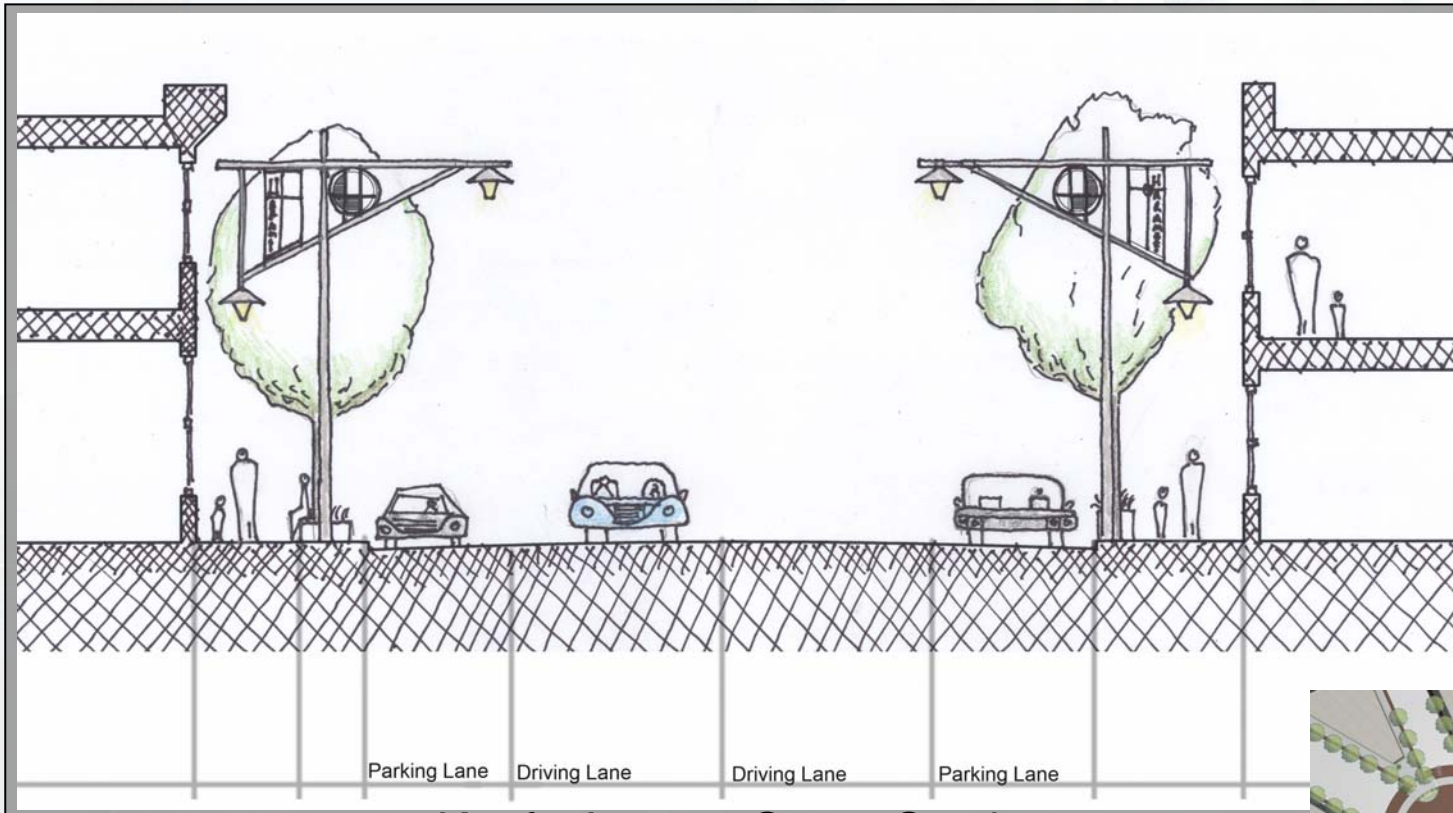
Keefe Avenue Street Section



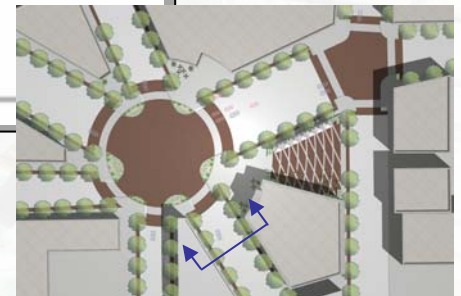
5 POINTS INTERSECTION



5 POINTS INTERSECTION



Keefe Avenue Street Section



5 POINTS INTERSECTION



Community Design Solutions