



RIVERWORKS CENTER: Gateway and Median Redesign



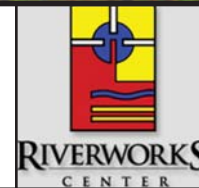
18 March 2009





Gateway

Viewing East on Capitol Drive at N. 1st Street



Riverworks Center
Median Design

Sheet 1

18 March 2009



Gateway

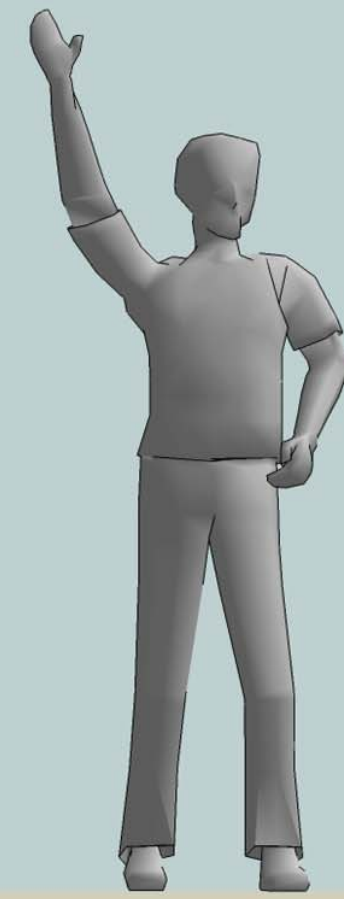
Viewing Northeast on Capitol Drive at N. 1st Street



Riverworks Center
Median Design

Sheet 2

18 March 2009





Intersection

Viewing Southeast on Capitol Dr at Holton St (Similar at Richards St)



Riverworks Center

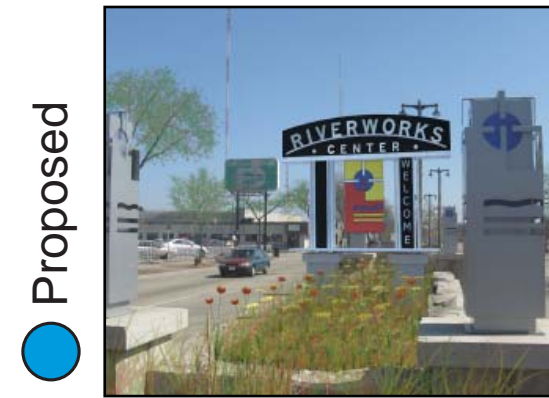
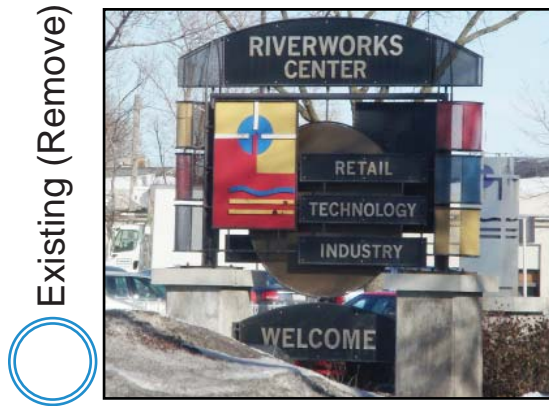
Median Design

Sheet 4

18 March 2009

Key:

Gateway Feature



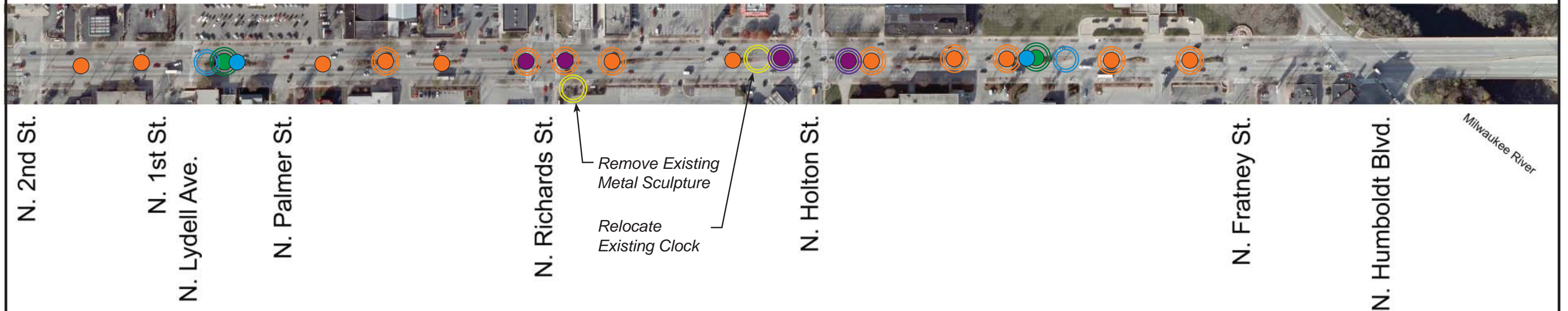
Flower Bed Feature



Intersection Feature



Connector Feature



Descriptive Overall Plan



Riverworks Center
Median Design

The Riverworks Development Corporation approached Community Design Solutions (CDS) to develop a new design language that unites streetscape features in the Riverworks Center from N. 2nd Street to N. Humboldt Boulevard. The primary focus of the collaboration was to design a new gateway sign for the Riverworks Center on Capitol Drive. CDS's approach for the new gateway was to relate its design to the recently constructed stone flower beds with modern light towers located on Capitol Drive and the recently constructed gateway sign located on the corner of N. Richards Street and E. Keefe Avenue. The secondary focus of the collaboration was to incorporate the new design language throughout the Capital Drive median in the Riverworks Center.

CDS initially established which structures in the median should remain, and which should be removed. The stone flower beds with light towers were the only features CDS identified to preserve. The gateways removal was recommended due to rusting, out-dated identifying text, and because they obstruct the view of the flower beds with the light towers. The wave-like perforated metal panels removal was recommended since many of the panels are missing, damaged, or rusted. Also, the perforated metal sculpture located on the southeast corner of N. Richards Street and Capitol Drive was recommended for removal. Finally, the clock's incompatible style warrants the recommendation for relocation to a less prominent place in the Riverworks Center. Once these recommendations were made, CDS began developing the new design language.

After the preserve or remove label was placed on each existing feature, CDS developed a series of identifiers for the median to unify Capitol Drive in the Riverworks Center. The identifiers include the gateway feature, the intersection feature, and the connector feature. One gateway will be located just east of N. 1st Street and the other gateway will be located just west of N. Pierce Street. The gateways are the major thresholds for

the Riverworks Center along Capitol Drive. The second identifier is the intersection feature. The intersection features are located on Capitol Drive at N. Richards Street and N. Holton Street. These features are aesthetically related to the gateway. The intention is that people traveling along N. Richards Street or N. Holton Street will approach Capitol Drive and recognize they have entered the Riverworks Center. The final identifier for the Riverworks Center Capitol Drive median is the connector feature. The connector feature is expressed in a unifying wrought iron fence, shade-providing trees, and coniferous bushes. The three identifiers will help create a unifying urban theme along Capitol Drive in the Riverworks Center and aid future streetscape decisions outside of the median.

